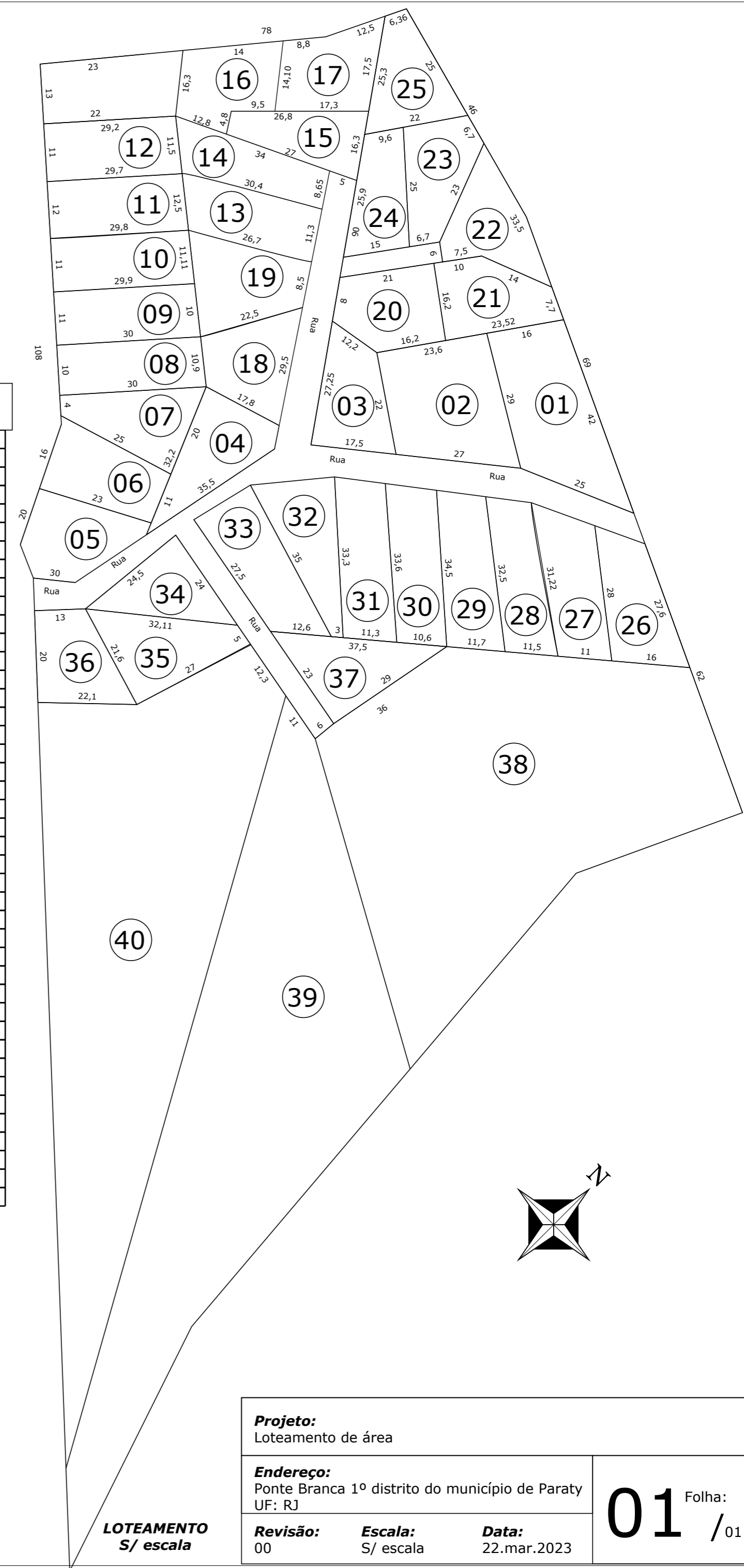


LOCALIZAÇÃO E ÁREA DOS LOTES

		Área (m ²)	PONTO 1 latitude	longitude	PONTO 2 latitude	longitude	PONTO 3 latitude	longitude	PONTO 4 latitude	longitude	PONTO 5 latitude	longitude
lote 1	Ricardo	600	-23.231.938	-4.477.366	-23.230.049	-44.773.867	-23.231.938	-44.774.123	-23.231.814	-44.774.051		
lote 2	Bruno Sanchez	600	-23.230.049	-44.773.867	-23.232.224	-44.774.058	-23.232.128	-44.774.236	-23.231.938	-44.774.123		
lote 3	Matheus	324,5	-23.232.224	-44.774.058	-23.232.339	-44.774.179	-23.232.148	-44.774.355	-23.232.128	-44.774.236		
lote 4	Camila	334	-23.232.387	-44.774.209	-23.232.671	-44.774.255	-23.232.414	-44.774.403	-23.232.352	-44.774.250		
lote 5	Matheus	332,8	-23.232.671	-44.774.255	-23.232.906	-44.774.326	-23.232.775	-44.774.452	-23.232.651	-44.774.268		
lote 6	Carine	321,6	-23.232.651	-44.774.268	-23.232.775	-44.774.452	-23.232.657	-44.774.553	-23.232.566	-44.774.317		
lote 7	Carine	312,3	-23.232.566	-44.774.317	-23.232.657	-44.774.553	-23.232.636	-44.774.458	-23.232.414	-44.774.403		
lote 8	Carine	340,9	-23.232.414	-44.774.403	-23.232.636	-4.477.458	-23.232.578	-44.774.673	-23.232.356	-44.774.496		
lote 9	Camila	326,2	-23.232.356	-44.774.496	-23.232.578	-44.774.673	-23.232.519	-44.774.760	-23.232.307	-44.774.581		
lote 10	Camila	328,7	-23.232.307	-44.774.581	-23.232.519	-44.774.760	-23.232.463	-44.774.845	-23.232.256	-44.774.671		
lote 11	Matheus	361,5	-23.232.256	-44.774.671	-23.232.463	-44.774.845	-23.232.403	-44.774.944	-23.232.189	-44.774.774		
lote 12	Matheus	333,18	-23.232.189	-44.774.774	-23.232.403	-44.774.944	-23.232.343	-44.775.033	-23.232.134	-44.774.866		
lote 13	Camila	330,2	-23.232.111	-44.774.462	-23.232.256	-44.774.671	-23.232.189	-44.774.774	-23.232.032	-44.774.533		
lote 14	Camila	310,8	-23.232.032	-44.774.533	-23.232.189	-44.774.774	-23.232.134	-44.774.866	-23.231.969	-44.774.589		
lote 15	Camila	280	-23.231.969	-44.774.589	-23.232.134	-44.774.866	-23.232.009	-44.774.778	-23.231.834	-44.774.708		
lote 16	Carine	280,1	-23.232.009	-44.774.778	-23.232.177	-44.774.902	-23.232.109	-44.775.003	-23.231.922	-44.774.875		
lote 17	Venda Conjunta	287,2	-23.231.834	-44.774.708	-23.232.009	-44.774.778	-23.231.922	-44.774.875	-23.231.755	-44.774.780		
lote 18	Camila	339,2	-23.232.352	-44.774.250	-23.232.414	-44.774.403	-23.232.356	-44.774.496	-23.232.174	-44.774.405		
lote 19	Camila	355,58	-23.232.174	-44.774.405	-23.232.356	-44.774.496	-23.232.256	-44.774.671	-23.232.111	-44.774.462		
lote 20	Carine	351,8	-23.231.998	-44.774.159	-23.232.128	-44.774.236	-23.232.148	-44.774.355	-23.232.091	-44.774.406	-23.231.933	-44.774.299
lote 21	Carine	311,3	-23.231.814	-44.774.051	-23.231.938	-44.774.123	-23.231.998	-44.774.159	-23.231.933	-44.774.299	-23.231.849	-44.774.250
lote 22	Carine	303	-23.231.793	-44.774.123	-23.231.849	-44.774.250	-23.231.908	-44.774.288	-23.231.892	-44.774.333	-23.231.714	-44.774.434
lote 23	Matheus	301,5	-23.231.892	-44.774.333	-23.231.946	-44.774.362	-23.231.806	-44.774.556	-23.231.707	-44.774.499	-23.231.714	-44.774.434
lote 24	Matheus	300	-23.231.946	-44.774.362	-23.232.062	-44.774.433	-23.231.884	-44.774.599	-23.231.806	-44.774.556		
lote 25	Venda Conjunta	332	-23.231.707	-44.774.499	-23.231.884	-44.774.599	-23.231.706	-44.774.761	-23.231.662	-44.774.744		
lote 26	Matheus	343	-23.232.046	-44.773.336	-23.232.146	-44.773.443	-23.232.013	-44.773.685	-23.239.630	-44.773.597		
lote 27	Matheus	340,4	-23.232.146	-44.773.443	-23.232.207	-44.773.524	-23.232.074	-44.773.798	-23.232.013	-44.773.685		
lote 28	Matheus	335,9	-23.232.207	-44.773.524	-23.232.286	-44.773.599	-23.232.137	-44.773.872	-23.232.074	-44.773.798		
lote 29	Carine	351	-23.232.286	-44.773.599	-23.232.363	-44.773.678	-23.232.196	-44.773.939	-23.232.137	-44.773.872		
lote 30	Camila	359,4	-23.232.363	-44.773.678	-23.232.427	-44.773.754	-23.232.267	-44.774.026	-23.232.196	-44.773.939		
lote 31	Carine	353	-23.232.427	-44.773.754	-2.323.250	-44.773.828	-23.232.329	-44.774.095	-23.232.267	-44.774.026		
lote 32	Camila	359,7	-2.323.250	-44.773.828	-23.232.523	-44.773.848	-2.323.246	-44.774.187	-23.232.329	-44.774.095		
lote 33	Carine	386	-23.232.523	-44.773.848	-23.232.603	-44.773.931	-23.232.581	-44.774.208	-2.323.246	-44.774.187		
lote 34	Matheus	314	-23.232.648	-44.773.982	-23.232.854	-44.774.199	-23.232.635	-44.774.218				
lote 35	Matheus	355	-23.232.652	-44.773.934	-23.232.891	-44.773.991	-23.232.854	-44.774.199	-23.232.648	-44.773.982		
lote 36	Camila	343	-23.232.891	-44.773.991	-23.233.042	-44.774.132	-23.232.933	-44.774.284	-23.232.854	-44.774.199		
lote 37	Carine	351	-23.232.363	-44.773.678	-23.232.624	-44.773.700	-23.232.603	-44.773.931				
lote 38	Carine	5.055	-23.232.137	-44.773.016	-23.233.092	-44.773.014	-23.232.671	-44.773.711	-23.232.363	-44.773.678	-23.232.046	-44.773.336
lote 39	Camila	5.066	-23.233.092	-44.773.014	-23.233.664	-44.773.220	-23.232.669	-44.773.809	-23.232.671	-44.773.711		
lote 40	Matheus	3.235	-23.233.664	-44.773.220	-23.233.042	-44.774.132	-23.232.891	-44.773.991	-23.232.652	-44.773.934	-23.232.669	-44.773.809



Projeto: Loteamento de área	
Endereço: Ponte Branca 1º distrito do município de Paraty UF: RJ	
Revisão: 00	Escala: S/ escala
Data: 22.mar.2023	
01 / 01	

LOTEAMENTO
S/ escala